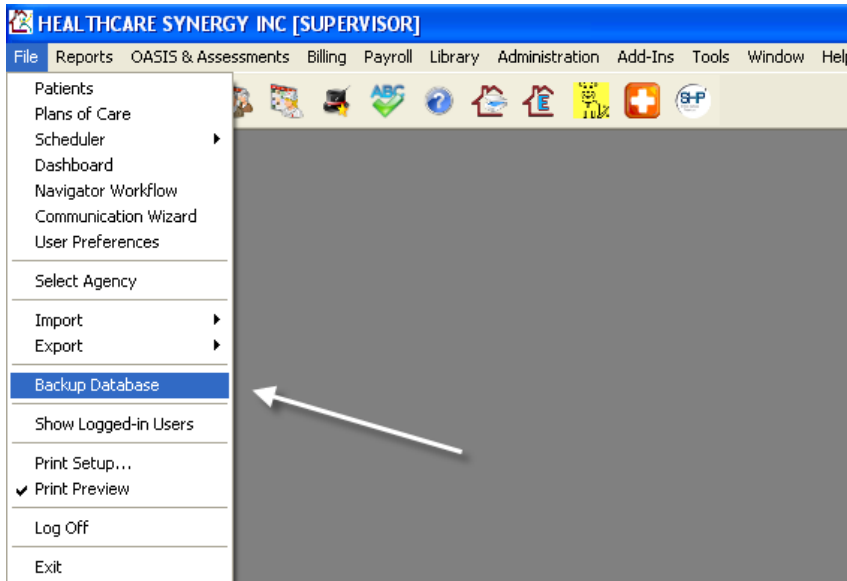
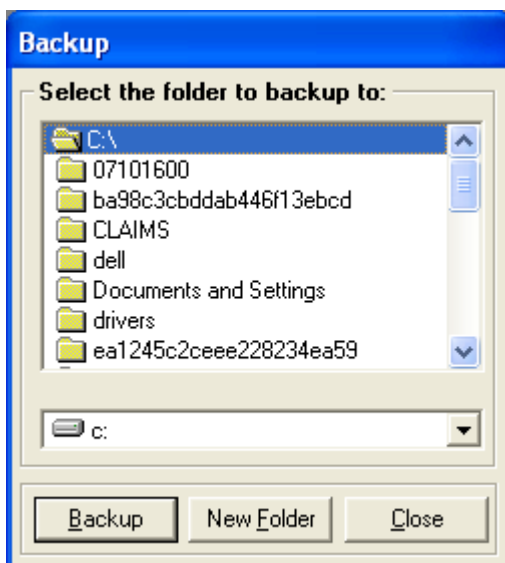


How to do a backup of the Healthcare Assistant Database

To make a backup of the Healthcare Assistant Database select *Backup Database* from the File menu



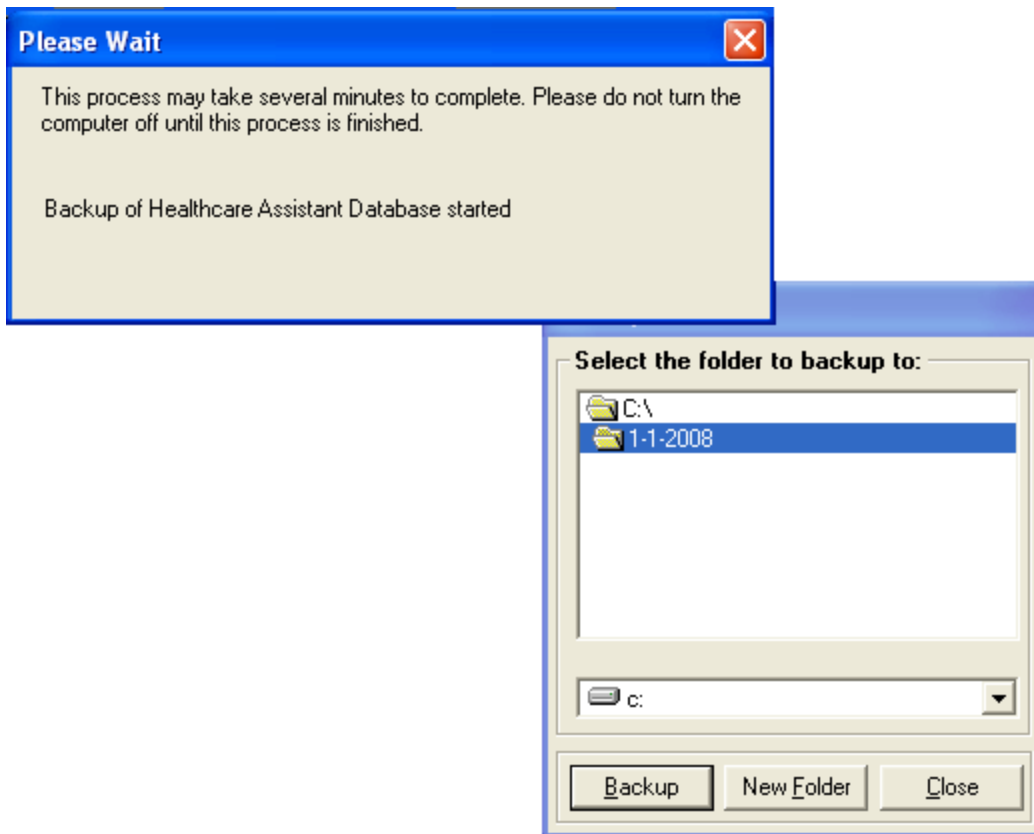
Select the location where you want to save the backup, create a new folder (by clicking on the New Folder button) where you will save the files and click on Backup.



Hot to backup the Healthcare Assistant Database

The information provided in this document is intended to help you solve basic and common problems with Healthcare Assistant. If you do not feel confident to follow and/or apply the proposed solutions please contact Healthcare Synergy Technical Support to better assist you.

The time that takes to do the backup depends on the size of your Database, please wait until the backup windows disappear; this means the backup is complete.



Notes -

- You should perform periodic backups (at least once a week recommended) depending on how much information you input into Healthcare Assistant.
- After the backup is finished check the location where you saved the backup. 2 files must be created on the folder (HAS.db and HAS.log)
- Save the backup files into an external device (USB drive, CD-R/CD-RW, DVD, etc.) and always keep the most recent at hand in case of an emergency.

Hot to backup the Healthcare Assistant Database

The information provided in this document is intended to help you solve basic and common problems with Healthcare Assistant. If you do not feel confident to follow and/or apply the proposed solutions please contact Healthcare Synergy Technical Support to better assist you.