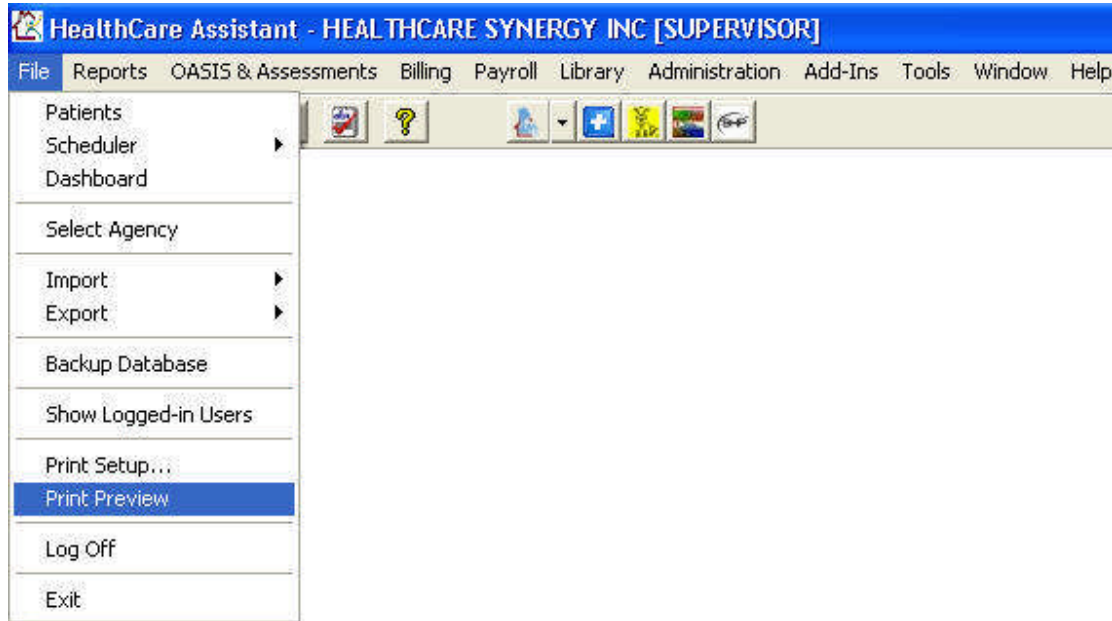
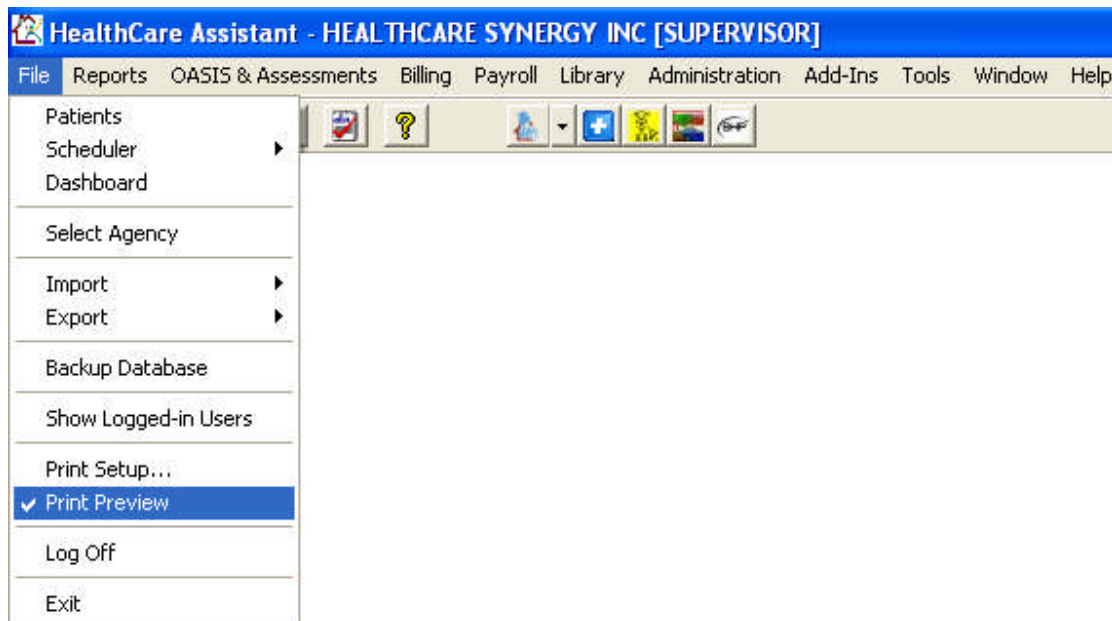


How to preview your documents before printing from Healthcare Assistant

To be able to view your documents before sending them to the printer you need to mark the option **Print Preview** under the **File** menu. If this option is not checked (like in the image below) your documents will go directly to your default printer.



If the option is checked you will be able to see the document before you send it to the printer.



Print Preview Documents from Healthcare Assistant

The information provided in this document is intended to help you solve basic and common problems with Healthcare Assistant. If you do not feel confident to follow and/or apply the proposed solutions please contact Healthcare Synergy Technical Support to better assist you.

This Healthcare Assistant functionality allows you to check that all the information is correct before printing it.

HEALTHCARE SYNERGY INC
5555 CORPORATE AVENUE
CYPRESS, CA 90630

Page 1 of 1
10/15/2008
10:54:59PM

List of Patients

For All Offices
Under Eval, Active, Non-Admit, Discharged, On Hold Patients
Admissions with SOC 1/1/1980 To 10/15/2008
In Ascending Order of Patient Name

Patient Name (Number)	Address	Phone	HIC Policy #
SAMPLE PATIENT (3)	12345 KNOWN ST CYPRESS, CA 90630	714-823-7227	123456789
SAMPLE PATIENT 2 (2002)	345 SAMPLE STREET ORANGE, CA 92869	562-468-4545	123456789A

Total Number of Intakes:	2
Total Number of Patients:	2

Print Preview Documents from Healthcare Assistant

The information provided in this document is intended to help you solve basic and common problems with Healthcare Assistant. If you do not feel confident to follow and/or apply the proposed solutions please contact Healthcare Synergy Technical Support to better assist you.